

BRIEFING SHEET UNITED KINGDOM 061/2025		
	Date of Publication	10 August 2025
Airspace Regulation (Off Route Airspace) SARG	Notes (a) All times are UTC. (b) References are to the UK AIP. (c) Information, where applicable, should also be used to amend appropriate charts.	
Civil Aviation Authority		
Aviation House, Beehive Ringroad, Crawley, West Sussex		
RH6 0YR		
david.ridley@caa.co.uk		
RESTRICTION OF FLYING REGULATIONS: CENTRAL LONDON 15-16 SEPTEMBER 2025		

- As part of the overall security arrangements following the death of her Royal Highness the Duchess of Kent, the Secretary of State for Transport has decided that it is necessary in the interests of security to introduce Restriction of Flying Regulations under Article 239 of the Air Navigation Order 2016 in the vicinity of Central London during the period 15-16 September 2025.
- The times mentioned in this Briefing Sheet are Universal Co-ordinated Time (UTC), which is one hour behind British Summer Time (BST).
- Subject to paragraph 4, **between 1300 hours on 15 September 2025 and 1600 hours on 16 September 2025** no aircraft is to fly below 2500 FT AMSL within the area bounded by:

SFC to 2500 FT AMSL		
a	513611N 0001644W	then straight line to
b	513611N 0000311W	then clockwise arc of a circle having a radius of 17 NM centred
c	512812N 0002713W	To
d	512625N 0000010W	then straight line to
e	512013N 0000316W	then straight line to
f	512013N 0001641W	then clockwise arc of a circle having a radius of 13 NM centred
g	512812N 0000020W	To
h	513611N 0001644W	-

- Paragraph 3 does not apply to any aircraft:
 - making an approach to or departing from:
 - London Heathrow Airport whilst under the direction of either London Terminal Control Centre at Swanwick or the air traffic control unit at London Heathrow Airport,
 - London City Airport whilst under the direction of either the London Terminal Control Centre at Swanwick or the air traffic control unit at London City Airport,
 - Royal Air Force Northolt whilst under the direction of either London Terminal Control Centre at Swanwick or the air traffic control unit at Royal Air Force Northolt, or
 - London Heliport whilst under the direction of either London Terminal Control Centre at Swanwick or the air traffic control unit at London Heliport, or
 - operated by or on behalf of—
 - a Police Air Support Unit
 - an Emergency Medical Service,
 - the Maritime and Coastguard Agency for the purpose of Search and Rescue Operations, or
 - the King's Helicopter Flight, or

- c. operating with the permission of the Metropolitan Police Service, who may be contacted on telephone number 07917-235494 or via email p199919@met.police.uk.
- 5. For the duration of the airspace restrictions within the London CTR all Non-Standard Flight Clearances (NSF) and Enhanced Non-Standard Flight Clearances (ENSF) are withdrawn as is the use of Helicopter Route H4. Operators of helicopters scheduled to operate into and out of the London Heliport (EGLW) during the period are to contact the Heliport on 020-7228-0181 to obtain a briefing on the procedures that are in place.
- 6. In relation to this document, the term 'aircraft' includes any small balloon, any kite weighing not more than 2 Kg, any unmanned aircraft and any parachute including a parascending parachute or paramotor.
- 7. Details of Restricted Airspace feature in the daily AIS Information Line message 08085-354802 and 01489-887515 and will be included on the Preflight Information Bulletins (PIB) through the AIS Website at <http://nats.aero/ais>.
- 8. Further enquiries can be made to Mr David Ridley, Airspace Regulator, Safety and Airspace Regulation Group, Civil Aviation Authority at david.ridley@caa.co.uk.

RESTRICTED AREA (TEMPORARY)

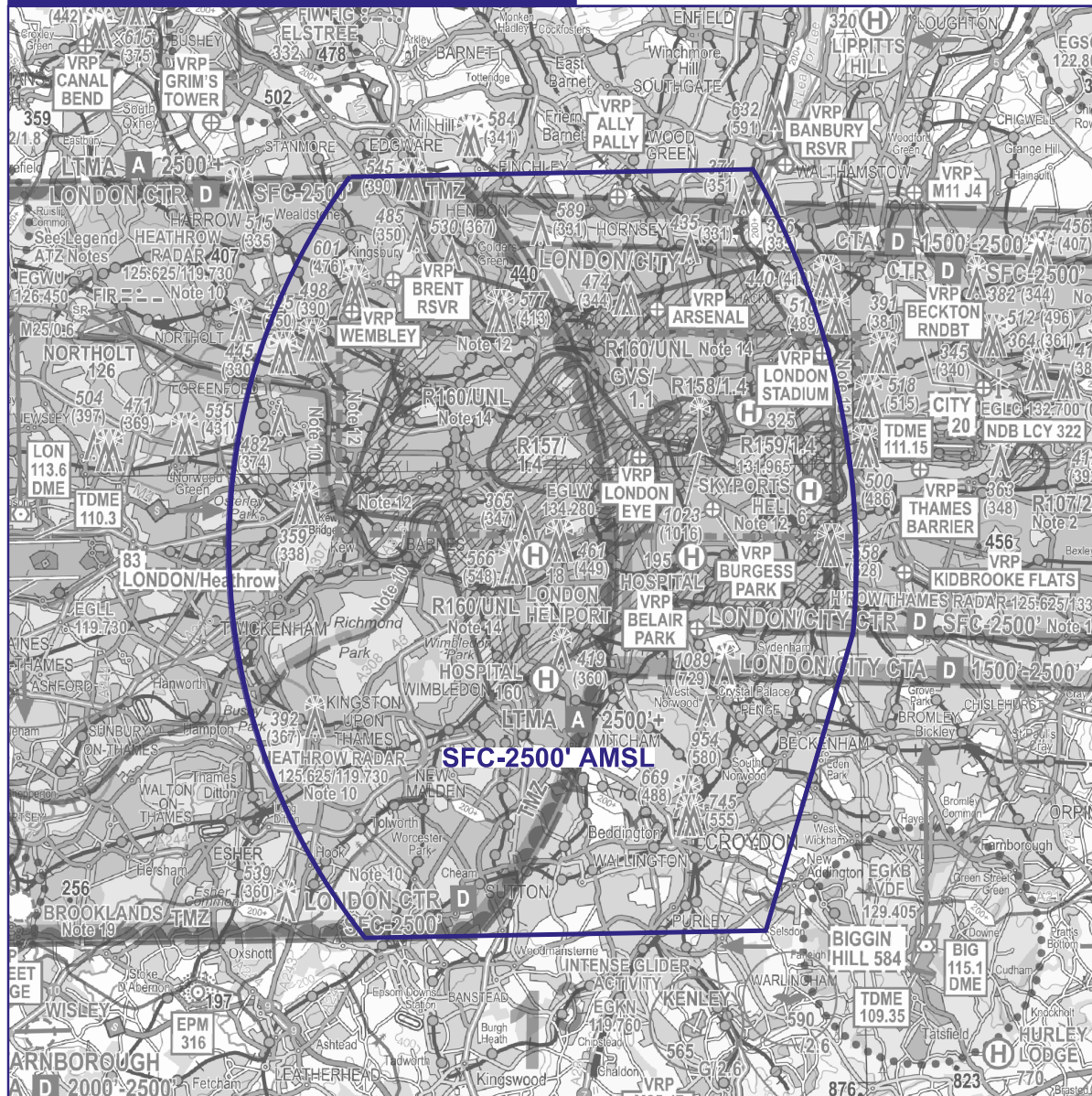
CENTRAL LONDON

5 0 5NM

NOTE: Aeronautical/topographical background detail shown from CAA VFR chart.
See NATS AIS website for latest VFR amendments.

NOT FOR OPERATIONAL USE - PLANNING PURPOSES ONLY

**SEE FULL DOCUMENT FOR DETAILS,
DATES & ACTIVE TIMES**



2025_116_CR10655_GRAPHIC DRAWN 09 SEP 25